



**4 Bed  
House - Terraced  
located in**

**£2,000**

ORLANDO REID



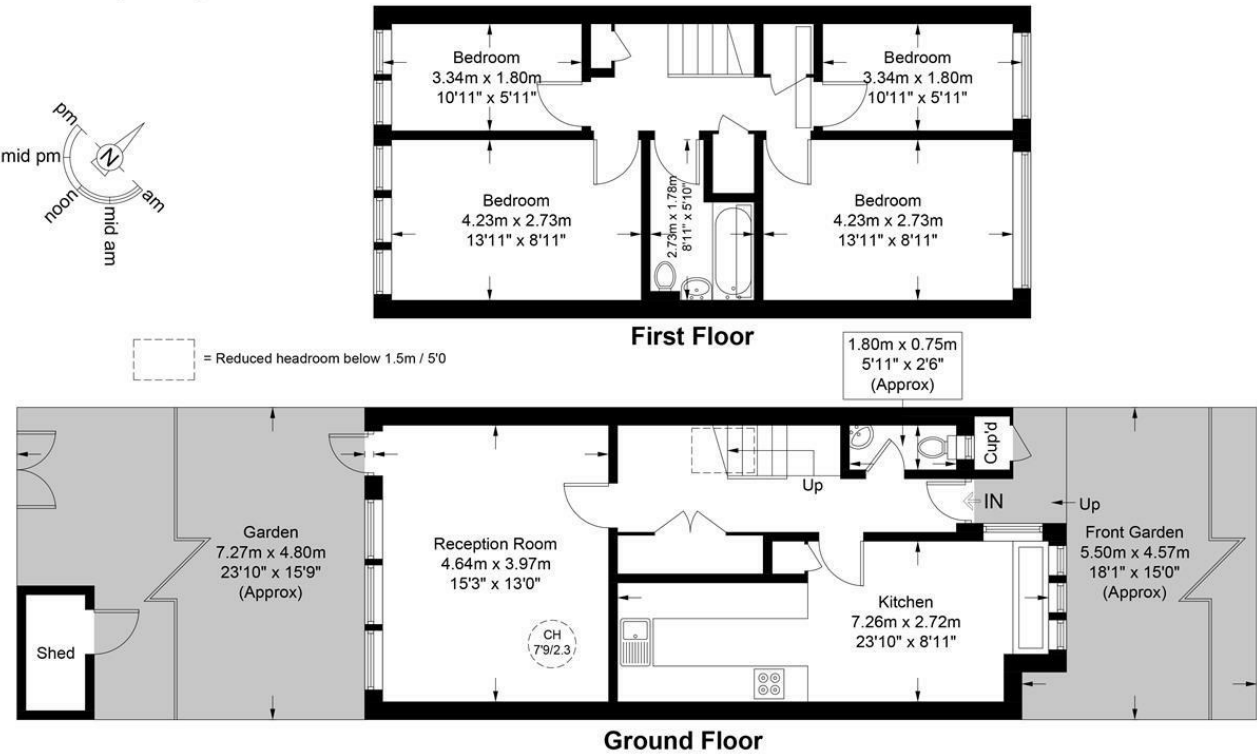
ORLANDO REID



Woodvale Walk, SE27

Restricted Height = 10 sq ft / 0.9 sq m

Approximate Gross Internal Area = 1047 sq ft / 97.3 sq m



DIRECTIONS

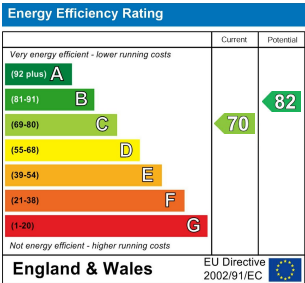
CONTACT

1-3 Old Town  
Clapham  
London  
SW4 0JT

E: [lettings@orlandoreid.co.uk](mailto:lettings@orlandoreid.co.uk)  
T: 020 7627 3197  
[www.orlandoreid.co.uk](http://www.orlandoreid.co.uk)



This plan is for layout guidance only and is not drawn to scale unless stated. All dimensions, including windows, doors, and the Total Gross Internal Area (GIA), are approximate. For precise measurements, please consult a qualified architect or surveyor before making any decisions based on this plan.



ORLANDO REID